



CLUB NEWS



Our new season kicked off with our first ever hybrid meeting! Local members have waited a long time to gather face to face (F2F) once again. Our meeting was quite successful, but not without a few minor issues. It has been reported that sound over zoom was a bit loud and echo like. This may be a room acoustics issue. We had problems activating the motorized rotating table, and when it was operating the auto focusing cameras could not focus on the moving target. Then it was discovered we needed to turn off the three cameras in the room to be able to share the slide screen and we needed to open the file in presentation mode prior to selecting share screen. Oh the joys of technology. Plus the F2F members need to keep the chatter down for the virtual attendees.

APOLOGIES: We apologize to any member that registered and did not receive the ZOOM link for the meeting. Our server, Gmail, has created a few obstacles for us by limiting the number of bulk emails we can send and the number of recipients in a bulk email. We have also received some notices of mail delivery issues. All servers made adjustments to their spam filters in August, so for some, our emails went into their spam folder or were completely rejected. We ask that you check and contact us the Friday or Saturday before the meeting if you need us to resend the link directly to you if it hadn't been received.

MEETING ATTENDANCE

31 people attended our meeting! 20 of the 33 members registered for the May ZOOM meeting were able to attend and 11 of the 12 local members that said they would attend were there. Phil Main who had been long awaiting the moment we could actually get together again sent his regrets that he would not be able to come due to health reasons. We hope you recover quickly so you can attend a meeting again soon Phil!

Welcome to our newest member **Andrew Henwood** of Niagara-on-the-Lake. We look forward to seeing progress on your schooner kit of the ALBATROSS.

On this day the MSON has a total of 99 members from across Canada, the USA, the UK, the Caribbean and Türkiye. About 2/3rds of our membership are happy to simply receive the newsletters, and we are fine with that.

MEETING PRESENTERS NEEDED

We need presentations for December through June. Everyone has something others would like to hear about and see. A model, technique, tool, etc. Time to take stock of what you're sitting on and let it shine for the rest of us. Send us an email to get on the 2023/24 program. Will you answer the call? **We are about to get desperate!!!** Presently we have the following presentations booked:

October	1) Byrnes table saw fence re-adjustment by Bill Short 2) The half model SHIFTY by Ray Peacock and Alan O'Neill
November	1) 3D Resin printing by Gabe Kraljevic 2) ???????
December through June	???????

Notice to all members, whether you attend ZOOM meetings or not. We ask members to submit a few images of

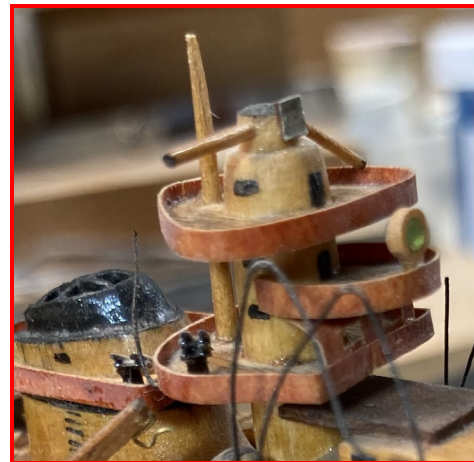
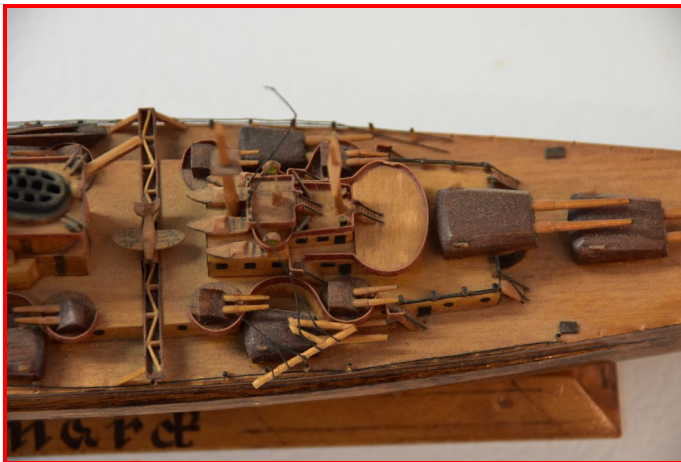
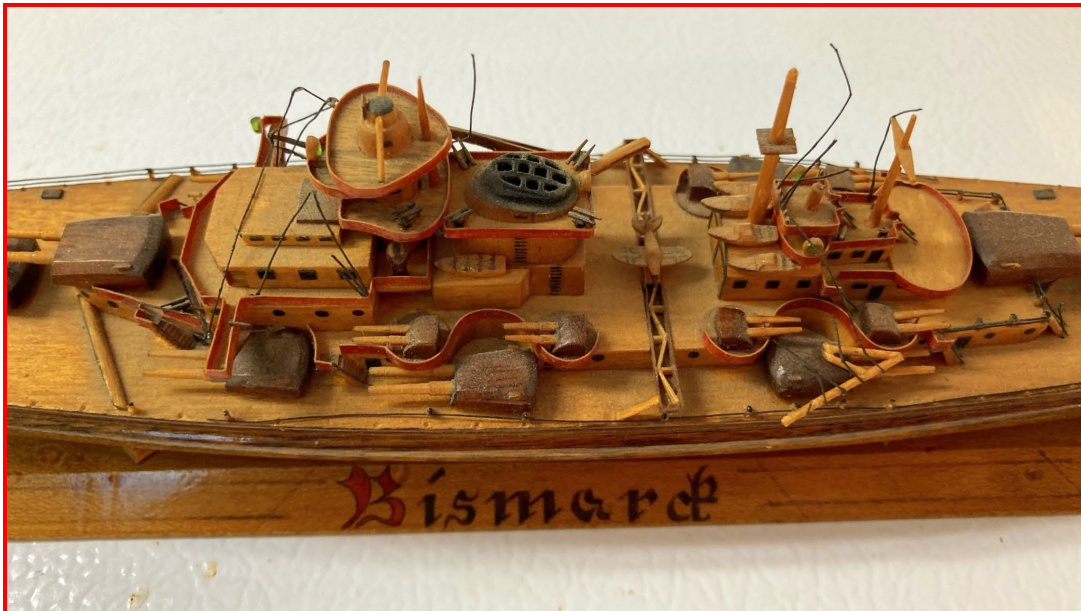


the progress on the model you are presently working on for the *"On the Workbench"* segment of our meetings. Please provide a short description to go with the images, including the vessel name, scale, and work being performed. We can present your images on your behalf if you wish and then open the forum to questions for you to answer. If you are not at the meeting, the questions will be emailed to you and your responses emailed to all members.

MAIN PRESENTATIONS

1) Ray Peacock showed us **two separate refurbished Prisoner of War (POW) models of the Bismarck**. The owners of each model allowed Ray to borrow them to bring to our meeting. The one model is at 1:840 scale (12 inches long) and the other at 1:486 scale (20-1/4" long).

First shown was the shorter model housed in a folding wooden case. This was made by a prisoner from Camp 133 in Lethbridge Alberta. First we reviewed images of the damaged model...



Following that Ray showed us the actual refurbished model...





Ray made a proper display case with a foam covered wooden base and red fabric overlay. The clam shell style case fits neatly into retainers and clear acrylic catches swing up to hold it securely in place. Ray also built in a slide out story board (tray) that displays the history of the ship. There are locking pins on the left and right sides of the case, through the acrylic sheet and into the wooden base to lock the two parts together. This protects the parts from separating if someone should pick the model up by the top half rather than the lower base.

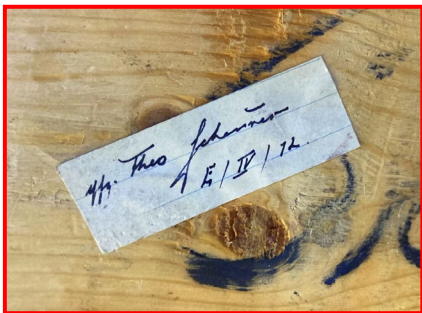




The second Bismarck model had been displayed in a heavy glass case and had some damage to the mast, a broken crane boom, a missing door, damaged or completely missing guns...



Ray completed repairs and built a new base with thin acrylic cover and safety locking pins. The original base is encased inside the cover mounted on the new base.



While considering how to secure the model to the baseboard Ray discovered a small label in German handwriting, the meaning of which has not yet been determined.

E/IV/12 (or E/4/12). Could it be the prison building block/wing/bunk? He asked that if anyone could help interpret it to please let us know.

Joe Lorenzo asked how it was that prisoners were allowed to handle the tools to make such fine models. The fact was that prisoners were treated differently in Canada as opposed to those held in Europe closer to the war, working on farms in remote communities and lumber camps in the middle

of nowhere with some freedom of movement (Where were they going to go?). This explains why so many wanted to stay in Canada after the war. The food was acceptable, the people nice enough, and there was so much space!



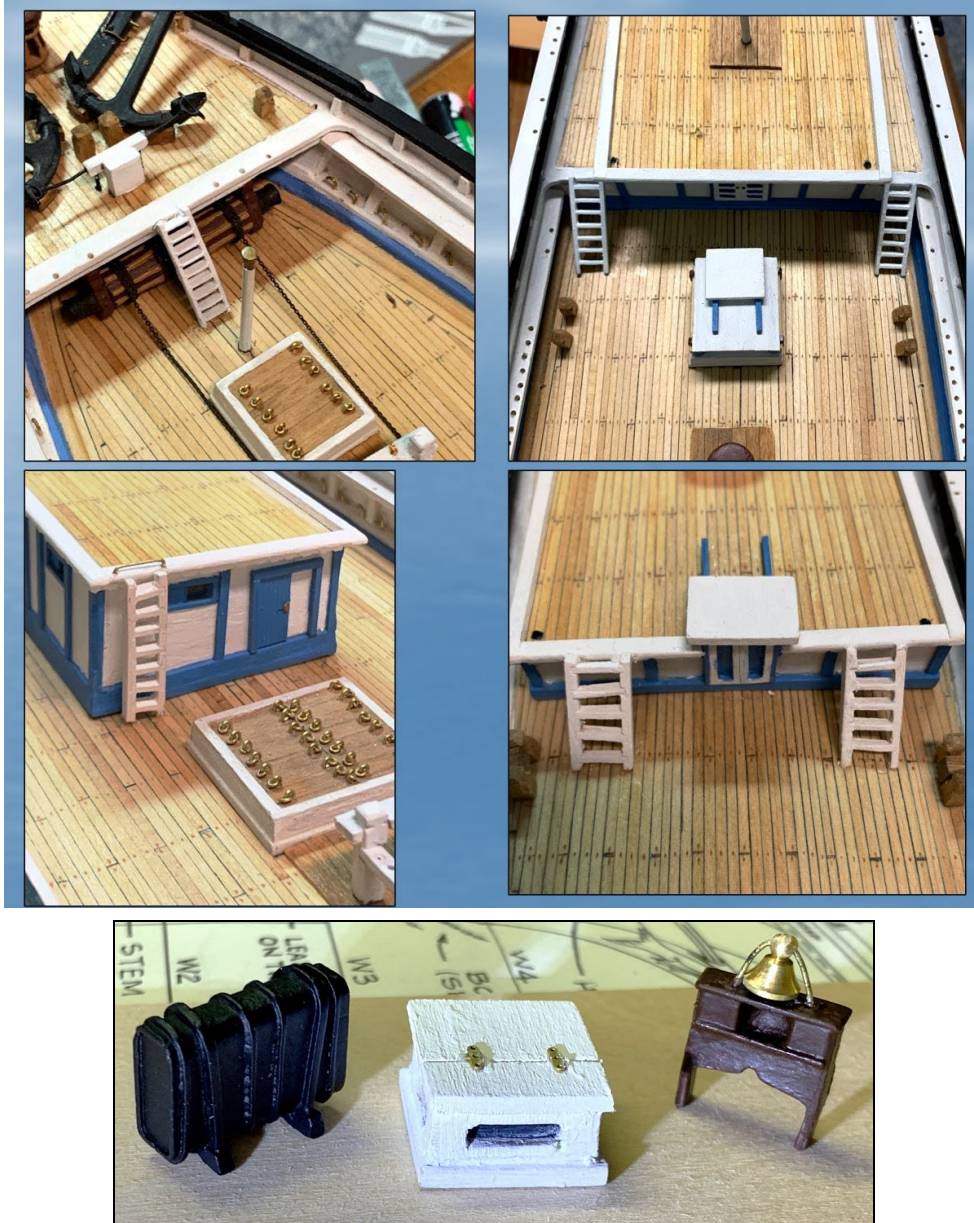
2) **Mort Stoll** entertained us with his images of some of the **forty (40) 3D printed figurines (1:74 scale)** he hand **painted** and mounted on the forecastle, upper gun deck, quarter deck and poop deck of his model of HMS Victory to bring her to life.

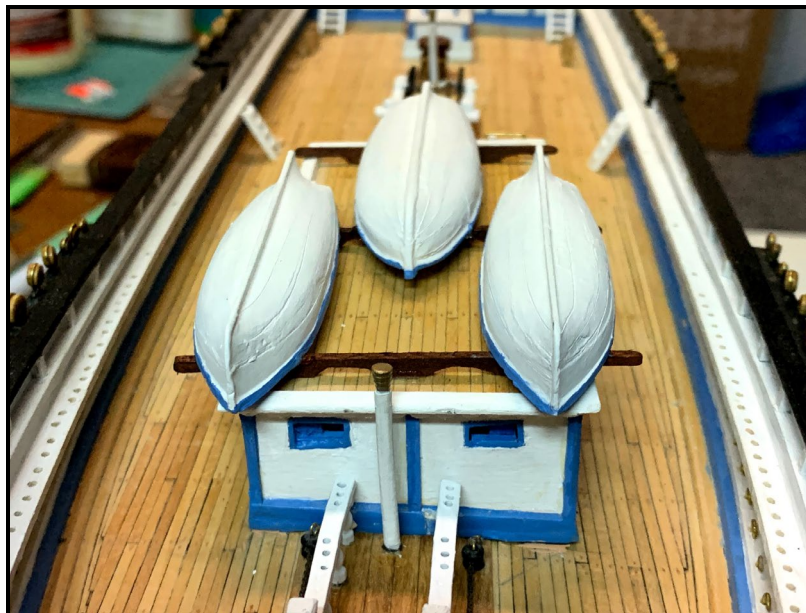
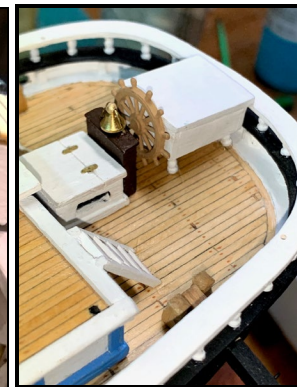
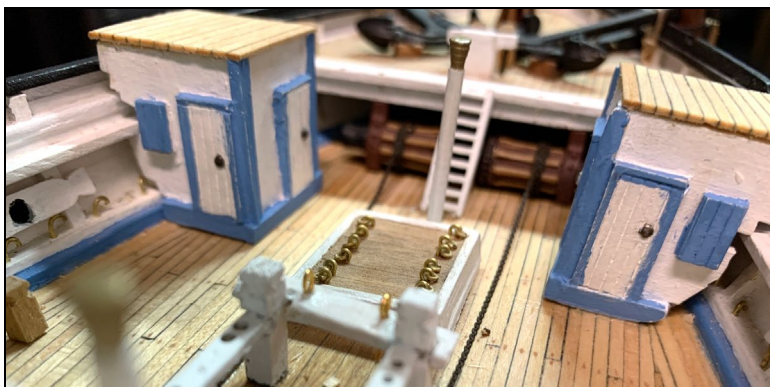
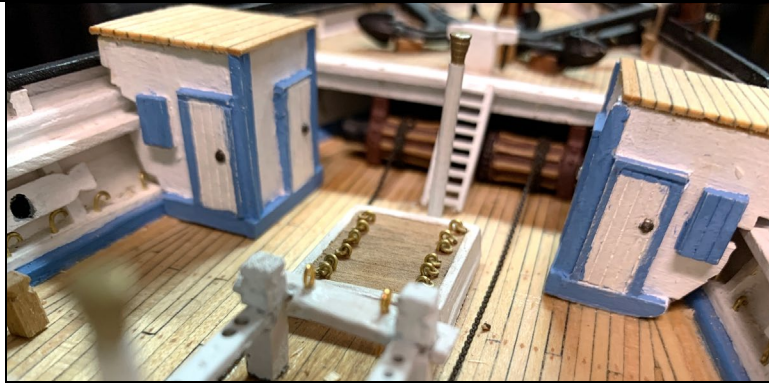


3) **Jared Fein** presented an update to his build of the **extreme clipper, the Flying Fish**. Since we last saw her in November 2021 he has added scratch built ladders, gangways, binnacle cabinet, aft storeroom, water tank, water



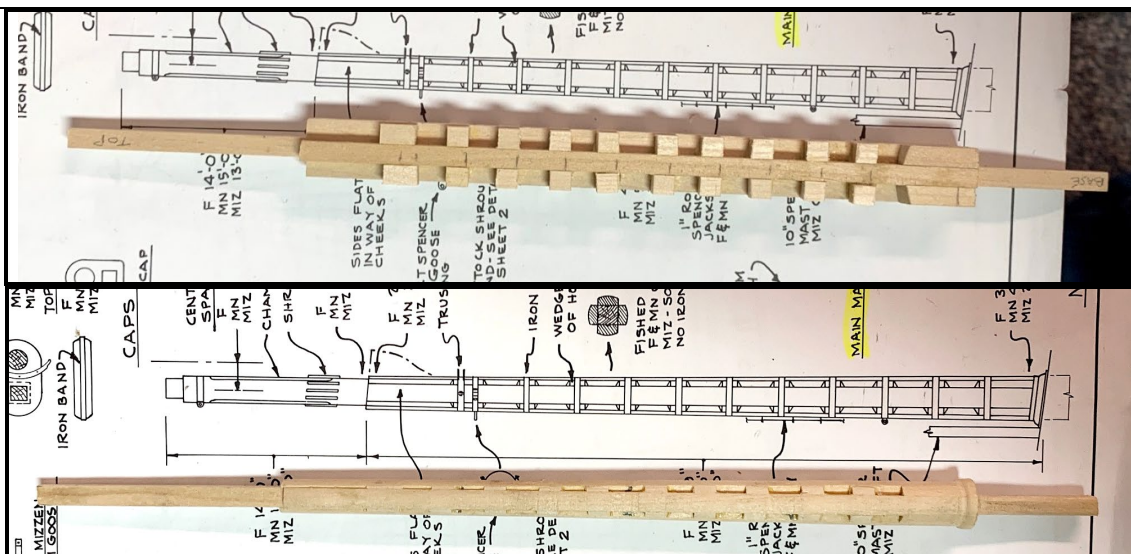
closets and wheel box, ship's boats, stack vent, metal railing, buckets and rack, knees for the aft cabin, and wood grating.



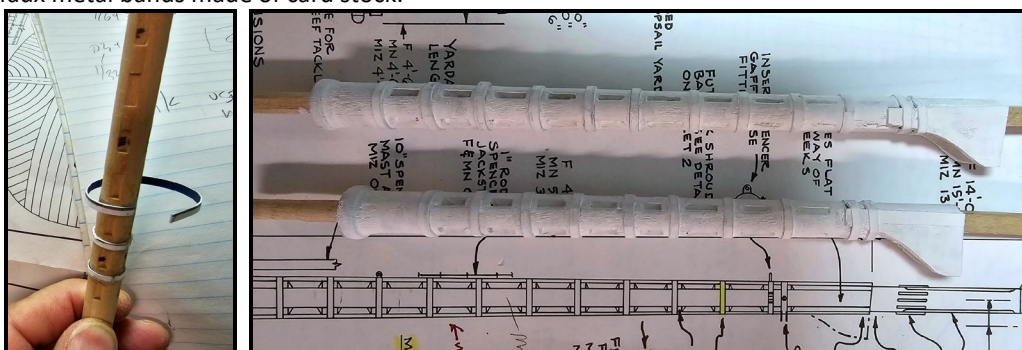


Jared also completed his lower fore and main made masts, their trees and tops (platforms). His masts are made to look as per the instructions but he found an easier way to do them in a building block manner, and then turned them on a Taig Micro Lathe II. His mizzen and bowsprit are also completed.



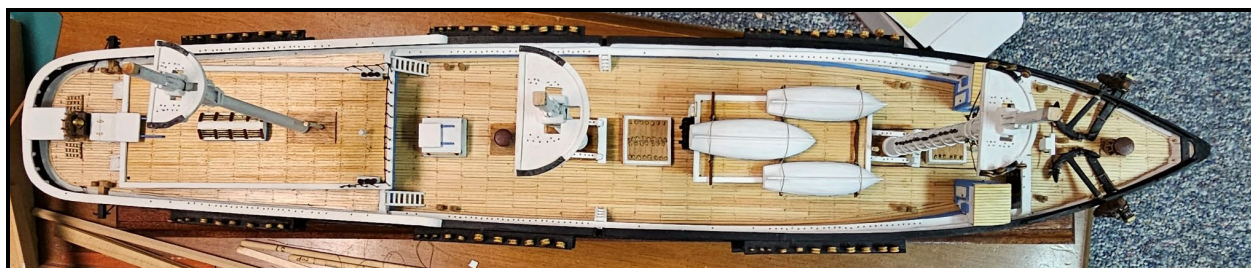


He added faux metal bands made of card stock.



Here is the state of her now...





John Garnish raised a question for discussion about the size and location of the steering wheel on the model and the apparent lack of space and visibility for the helmsman. The answer is that the helmsman would stand to the side of the wheel and steer by the sail settings.

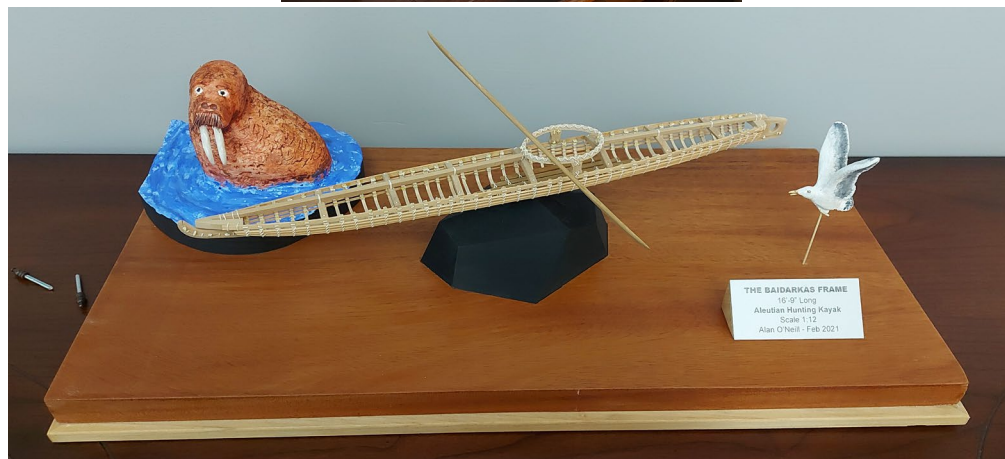
Alan O'Neill provided a short video tour of his basement shop... two shop vac's with cyclone separators, ceiling mounted dust filtration system, full size table saw, 4" edge planer, 13" thickness planer, grinder station, router table, Byrnes modeling table saw and sander, scroll saw, band saw, sanding station, mini wood lathe, oscillating drum sander, drill press, carving table and a homemade height adjustable and tilting modeling table. Below is a still panoramic photo for those that didn't attend the meeting.



Following that **Alan** presented his model of an **Aleutian Kayak** frame with his **hand carved and painted seagull and walrus** to provide some comparison of scale. He had since attended an NRG workshop on simulating water and learnt his water is more Caribbean tropical blue than Arctic cold grey. One more thing to "do over"! Alan's display



case cover is pinned to the base at both sides. And his display case is vented via two filtered/screened holes through the base to allow some air exchange to prevent humidity fogging up the inside or any off gases from building up over time. Last week he learnt his vents are too small so he will be reworking these also. Hmmmmmmmmm, sounds like the making of another presentation in the works.



Finally, **David Cramton** presented his completed model of the **Cutty Sark** to the F2F members. He has completed the standing rigging and is about to locate the yards, to be followed by the running rigging.



As an added treat **David Antscherl** was cleaning house and brought over some model kits to give away. These



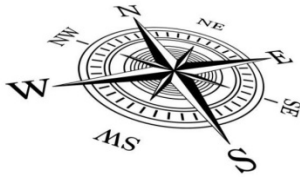


included an older Model Shipways kit of the **Roger B. Taney** revenue cutter, the **Colonial schooner Sultana**, a **metal and wood Gatling gun** model, and a prototype model of the **Nonsuch 30**, a small recreational keelboat. The actual full size boat was designed by Mark Ellis and built locally by Hinterhoeller Yachts in St. Catharines, Ontario, in 1978.

As expected, all models found a new home.

That concluded our presentations and monthly meeting.

A special thank you to all members that have stepped up to present and add to our meeting content. It is your participation that makes this club successful and helpful to others.



*The MSON
Helping to keep fellow modellers
on course since 2008*

Our next meeting will be held on **Sunday, 15 October 2023**
Forum opens at 1:15 PM Eastern Time for a 1:30 PM Eastern Time start

This will be a HYBRID meeting.

Local members can meet face to face (F2F) on site in NOTL.

Those not able to attend F2F can do so via ZOOM.

As always meetings and membership are open to all and are free!
Notices will be e-mailed.

PLEASE NOTE THE DATE CHANGE ABOVE FROM THE 2nd TO THE 3rd SUNDAY OF THE MONTH

We would normally meet on the 2nd Sunday which would be the 8th of October but as that is the Thanksgiving weekend in Canada so we must move it a week further to the 3rd Sunday which puts our next meeting to be on the 15th of October

The upcoming September meeting presentations:

- **How to re-adjust a Byrnes saw fence** - by *Bill Short*
(narrated by Ray Peacock)
- **The half model SHIFTY** - by *Ray Peacock and Alan O'Neill*
- On The Workbench (members build progress update reports)

Have you anything you would like to share at a meeting?

(Did I mention we are getting desperate?)

If so please send us an email.

Modelshipwrightsofniagara@gmail.com

Let us know if you have a build log on MSW.

<https://modelshipworld.com/>

