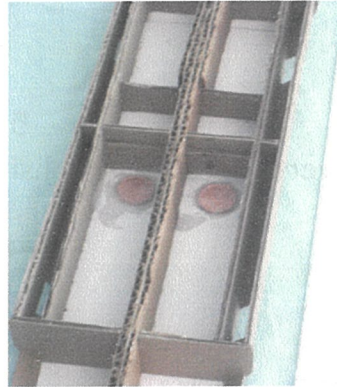
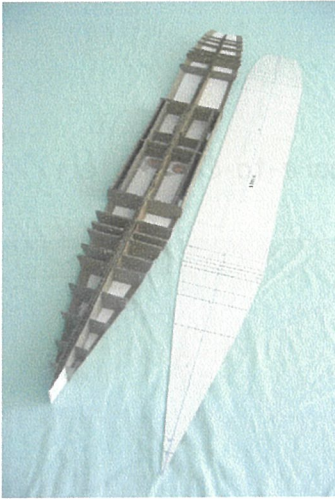


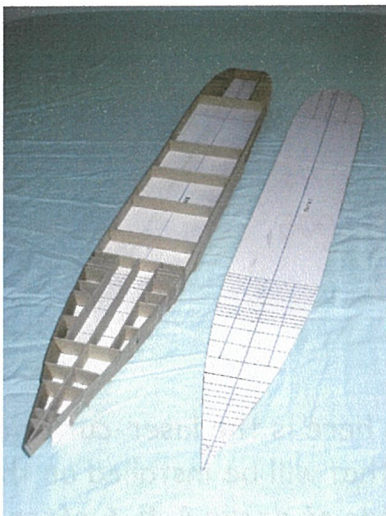
Building the model of *Queen Mary 2*

Work Started - Jan 26, 2005

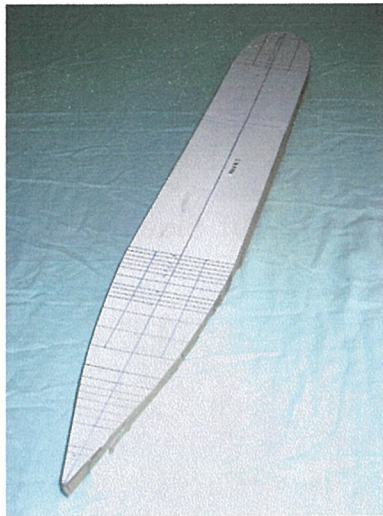


Two coins were placed at the centre of the keel
and later encapsulated - a maritime tradition for
newbuild

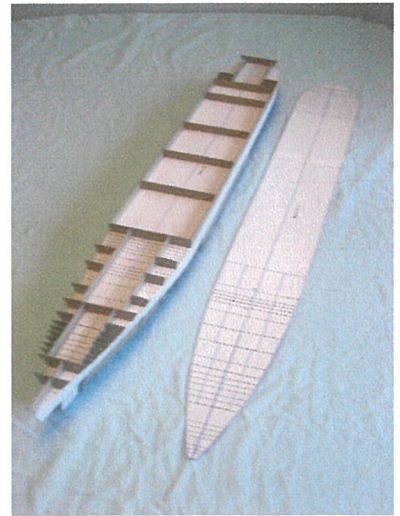
Joining of the Decks - January to February 2005



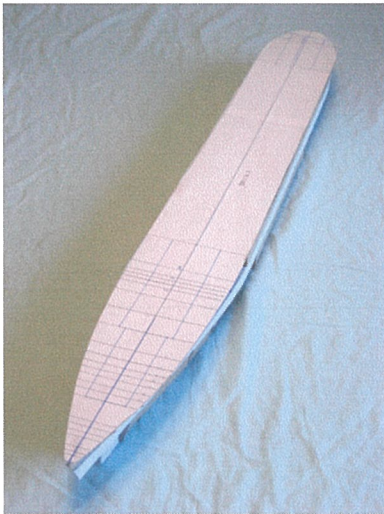
1



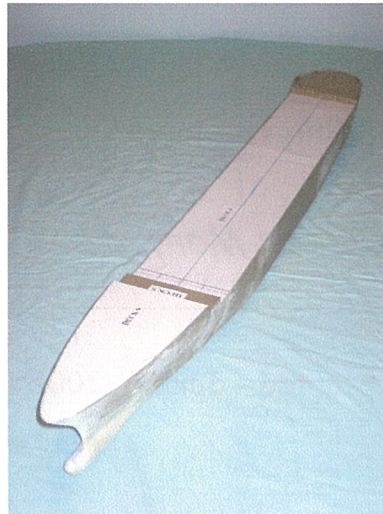
2



3



4



5

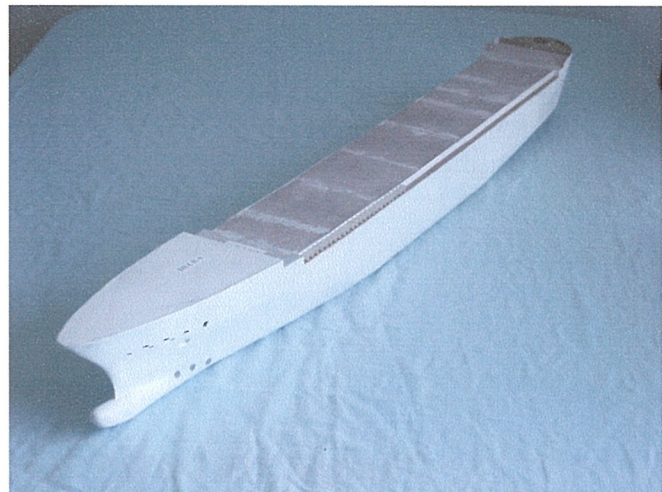


6

Side plates were installed. Transition of the Square-to-Curve stern



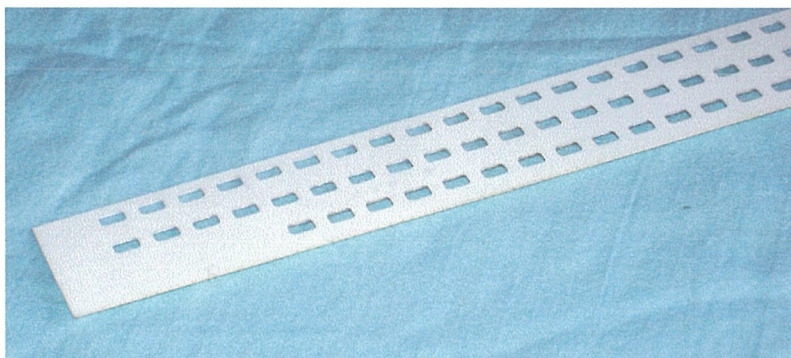
7



8

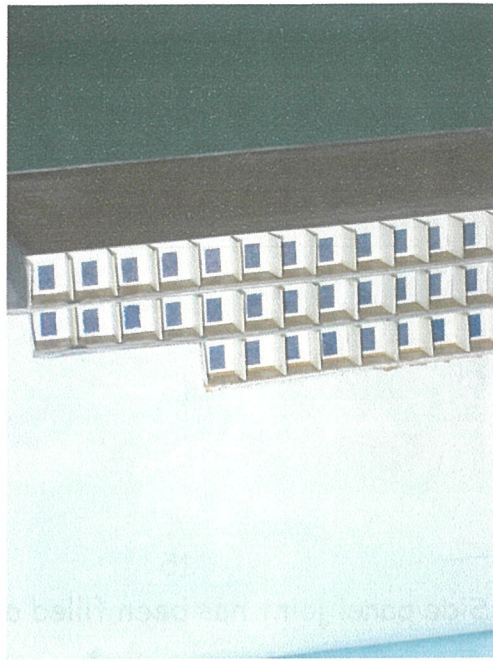
****The hull was wrapped, sanded and primed ****

Installation of the Laser-cut Side Panels - March 2005



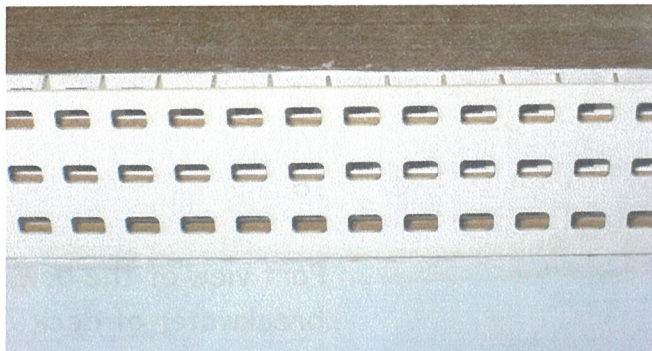
9

Shown here is the laser-cut side panel that will be installed on the port side of decks 4, 5, 6 after cabins are in place. The starboard panel is a mirror image of the port panel.



10

Details of the partially completed cabins on decks 4, 5 & 6

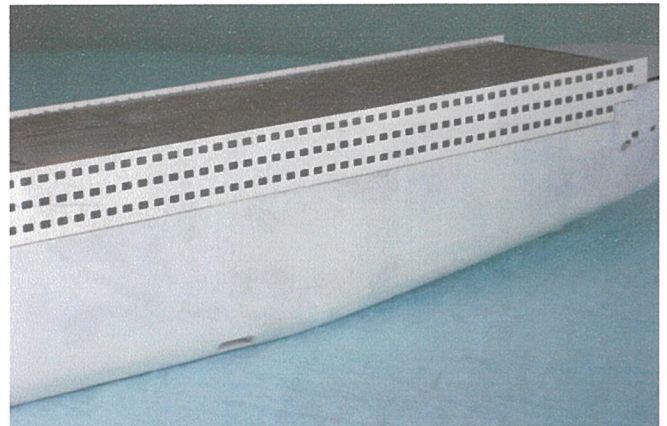


11

Shown is the port panel that was already installed on decks 4,5 & 6 Cabins



12

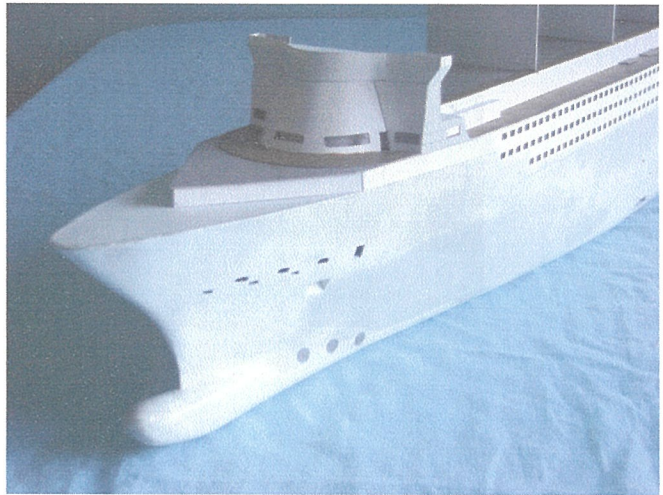


13

Another look the side panels. The joint to be filled and sanded smooth later.



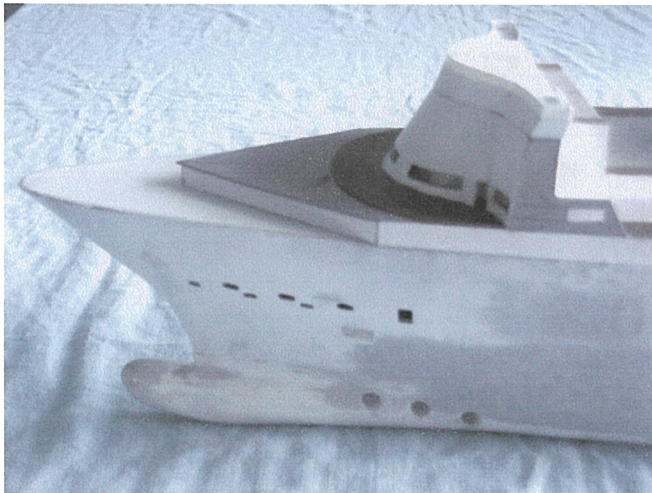
14



15

Side panel joint has been filled and sanded

Building the Superstructure - April to December 2005



16

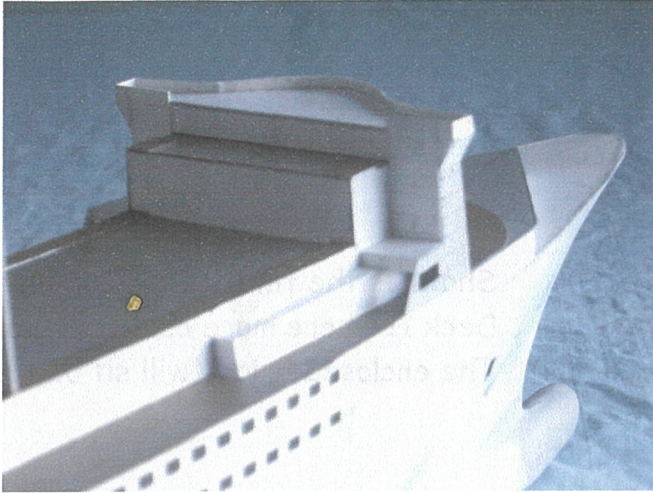
Port view of the bow. Detail of the breakwater of deck 7 is shown



17

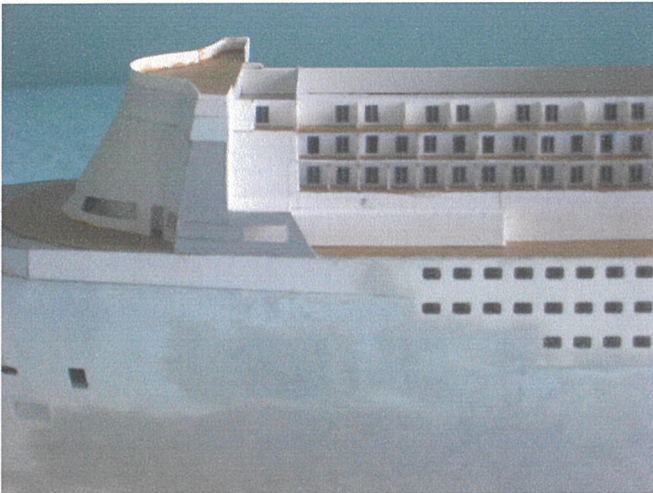
View of stern showing the deck planks.

0.08" wide V-groove Styrene sheets are used to simulate wood deck planks.



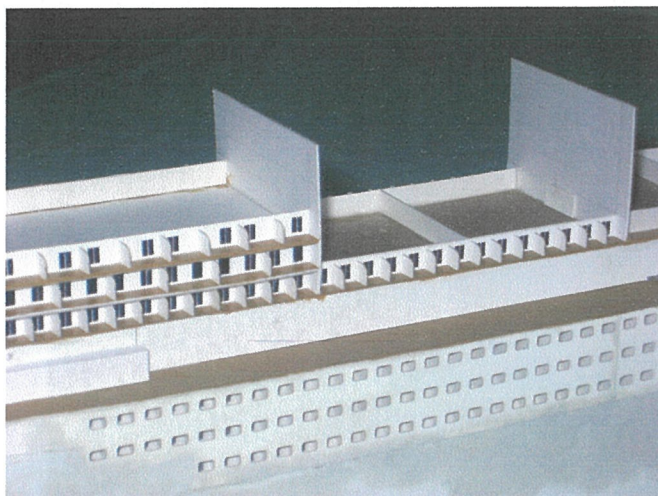
18

View of starboard bridge & bow

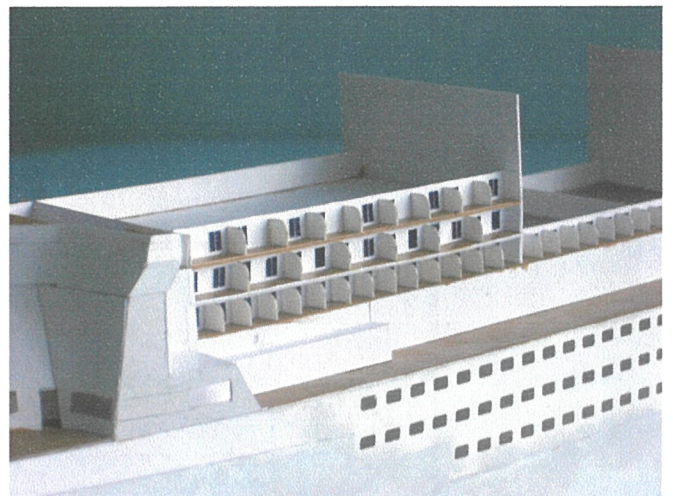


19

Shown are cabins of decks 8, 9 & 10 connected to the rear of the bridge



20



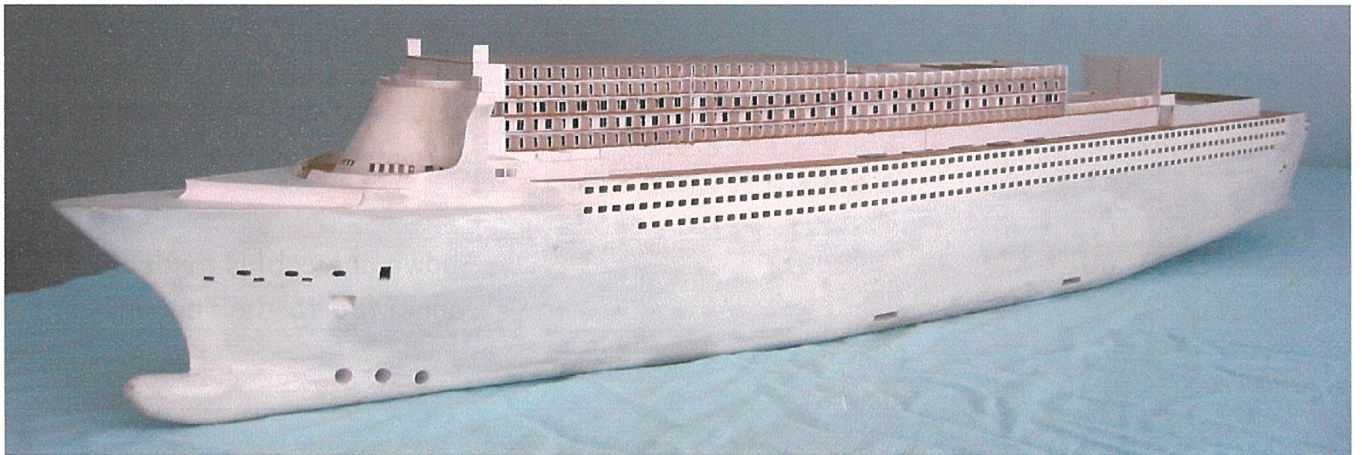
21

Another look at the cabins on decks 8, 9 & 10. Construction of cabins continued



22

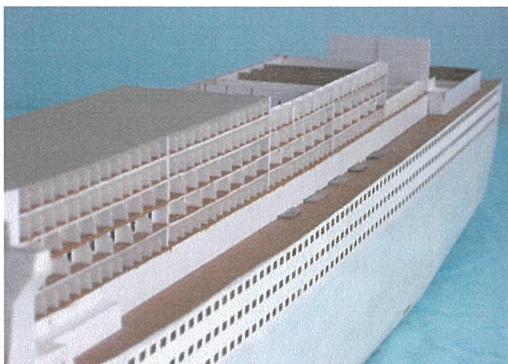
Shown is the finished bridge front up to Deck 11 where more cabins are located.
The enclosed bridge will sit on top of this deck.



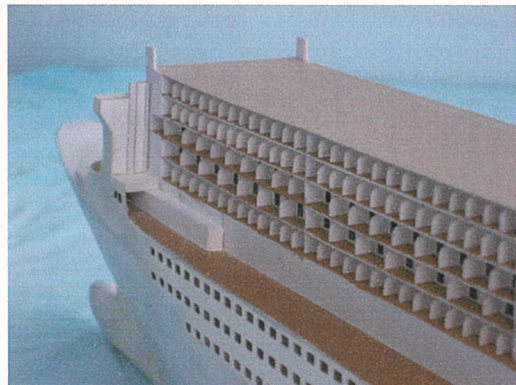
23

Work on cabins continued. These cabins all come with balconies and are located on five different sections of decks 8, 9, 10, 11 & 12.

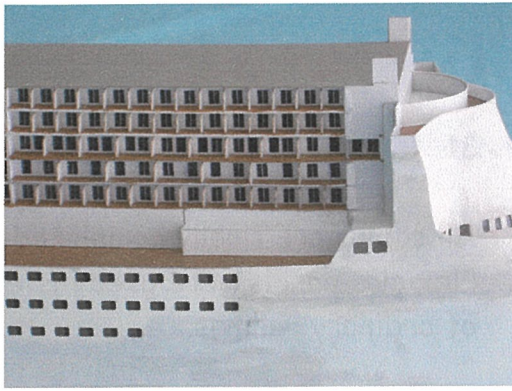
More view of the Port cabins



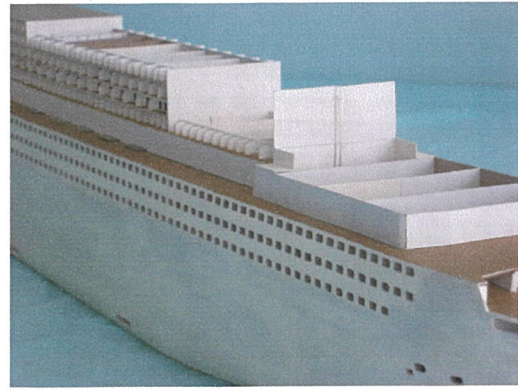
24



25



26
Starboard view of the bow cabins

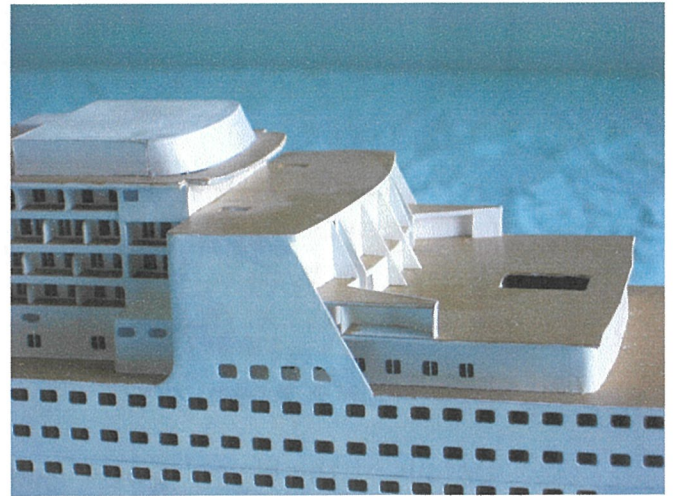


27
Port view of the cabins looking towards the bow

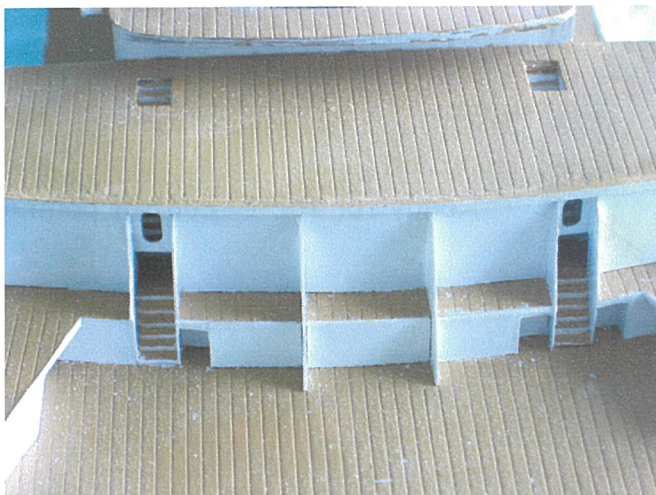
Stern Cabins are taking shape



28

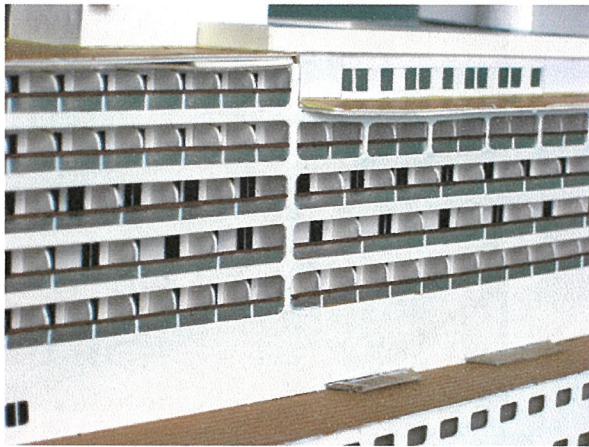


29



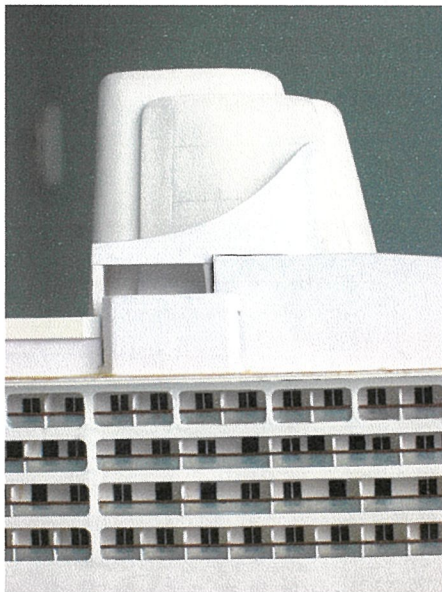
30

The stairs that go from deck 10 to 12



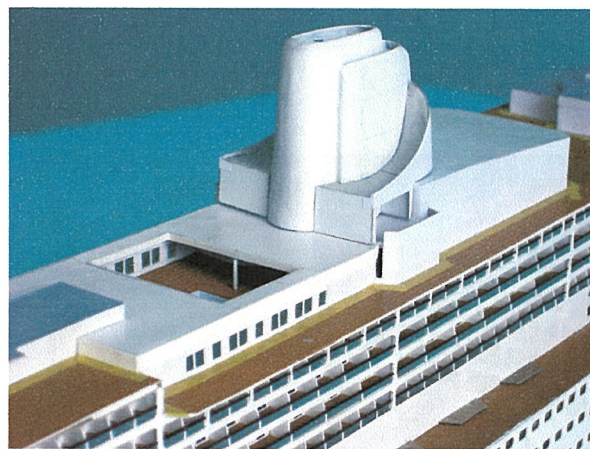
31

All cabins are finally completed. Plexiglas panels were used instead of ordinary railings.



32

Details of the Plexiglas panels. The Funnel and casing were also completed.



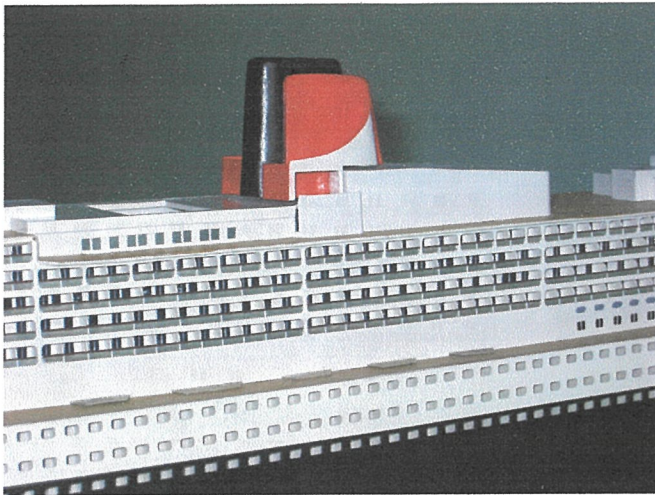
33



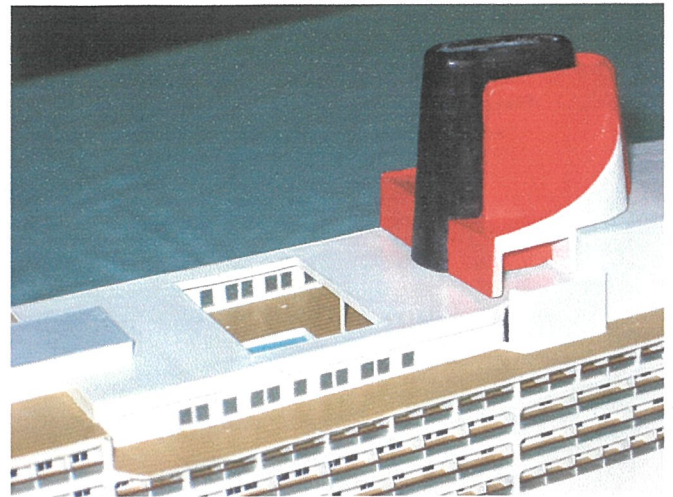
34

Ready for the 1st coat of paint

1st Coat of Paint - January 2006



35



36



37



38

This is how it looks after the 1st coat of paint was put on. Building of the bridge will start.

Building of the enclosed Bridge & Weather Enclosure of decks 12 & 13 - February to March 2006

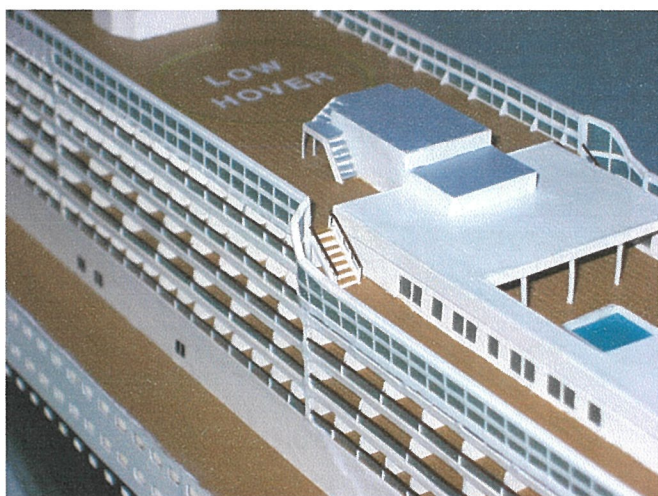


39

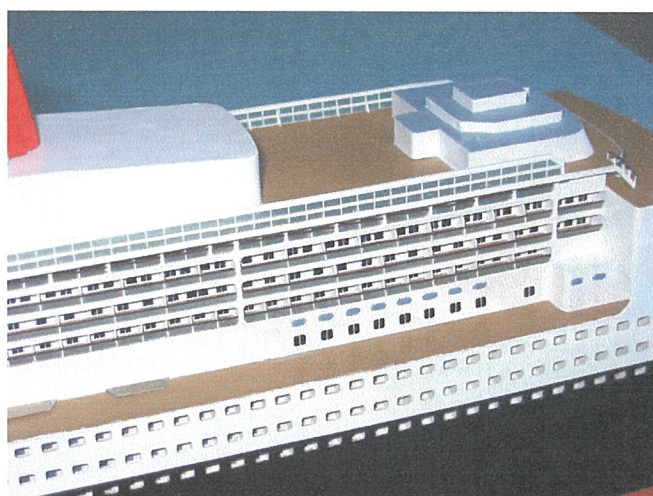


40

Details of the enclosed Bridge and Observation Area on deck 13

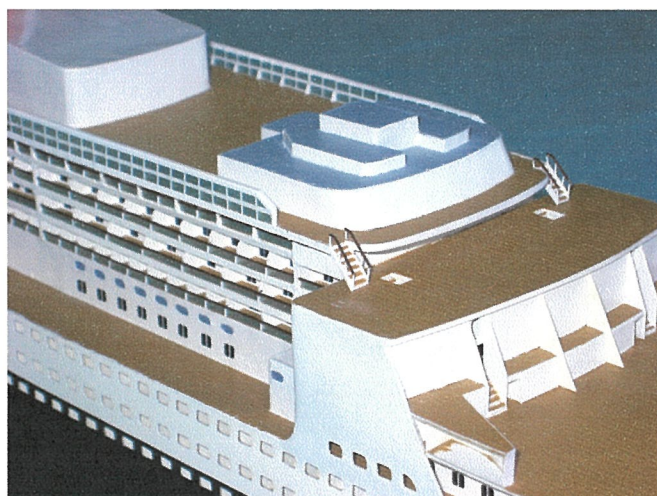


41



42

Weather enclosure of decks 13 & 12



43

More detail of the weather enclosure of deck 12

Building of the Weather Enclosure of the Pool Decks - April to May 2006



44



45



46



47

Details of the finished weather enclosure and the stern facing windows

Final Coat of Paint & Finishing of the Windows - June to September 2006



48



49



50

The elevator is now in place



51

More detail of the bridge & observation area



52

Layout of the port windows



53



54

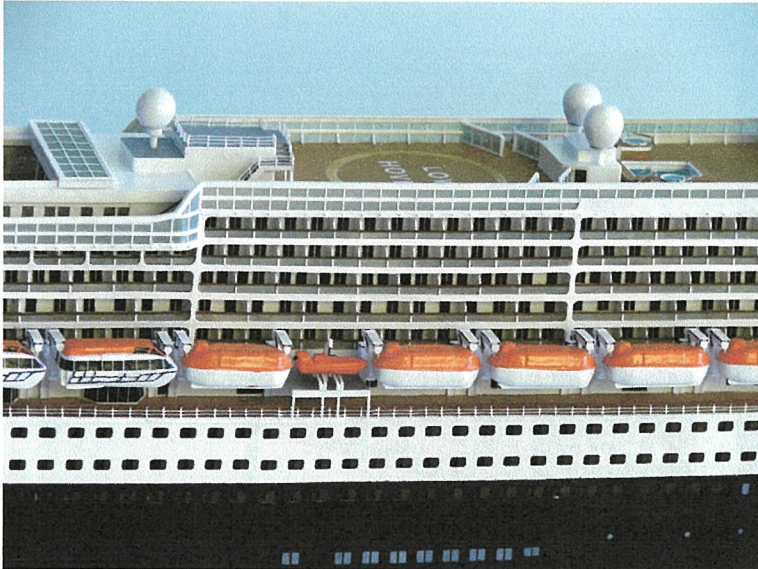
Details of the Bow Thrusters & Doors

Installing the Lifeboat Davits and Final Phase of Fitting-out - October 2006 to March 2007



55

Installation of the Lifeboat Davits



56

Lifeboats (Tenders) are hung from the davits. Fitting-out continued



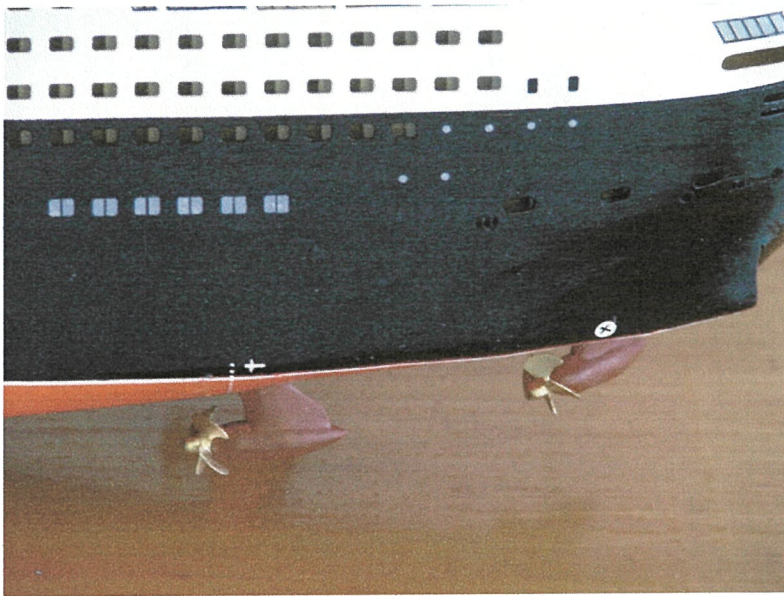
57

The finished starboard Bridge area



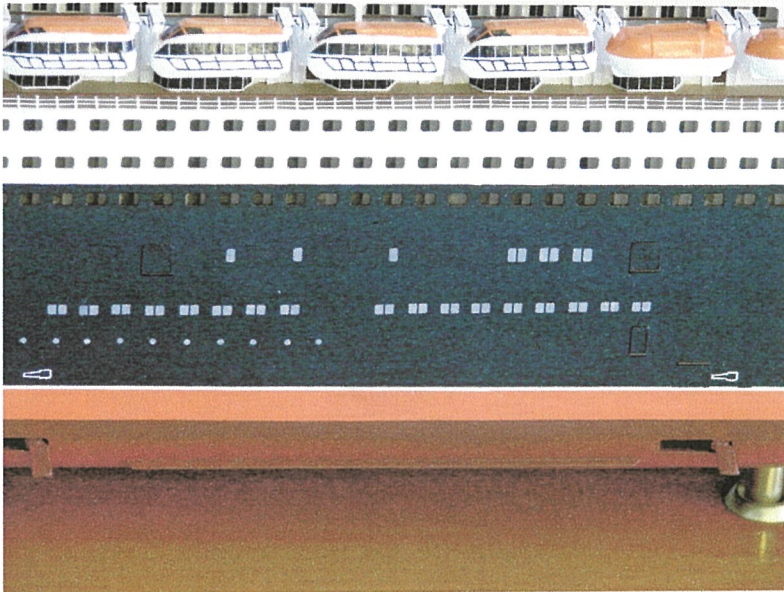
58

The model is mounted onto the display Base. The Axipods can be seen.



59

Details of the port Axipods. The front one is fixed, the back one can be rotated 360°.



60

The port Stabilizers.



61

The finished model on the display stand. Completion date : March 26, 2007